

DocMax | Add Documents

Last Modified on 03/12/2024 9:37 am AEST

This article is designed to cover the various methods of adding documents to DocMax.

If you are new to DocMax, we highly recommend enrolling in our [DocMax Basics Online Course](#) - it's completely free!

The *Add Document* window will appear when documents are added using the following methods:

1. Click the *Select Documents* button in the *Add Document* tab or *Add Document* window.
2. Placing a file in a *Drop Box* folder, which is configured to add via the *Add Document* window.
3. Dragging and dropping files from another location onto a DocMax window.
4. Adding a document in Outlook (with the *Outlook DocMax add-in* installed and enabled) using the *Add with Details* button.
5. Adding a document by 'printing' to DocMax using the *DocMax Printer*.

If the *Add Document* window is already open when additional files are being added, then the files will appear within the same *Add Document* window.

Password protected PDF's can be added to DocMax as well. The password will be requested from the *Document Preview* pane and once entered can be added to DocMax. Please note that protected PDFs cannot print, split, or append to or from another document.

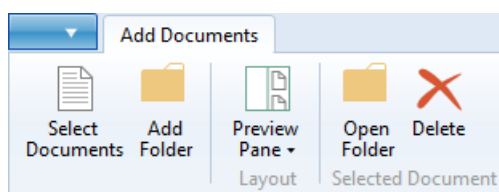
For buildings in Victoria that are Multi OCs and have multiple account groups in StrataMax, there is an additional drop-down menu called 'Account Group' so that the document can be allocated to a specific Owners Corporation.

Sub-Group buildings can also be selected if the document being added belongs to a property. If the Sub-Group building is selected, then the 'Debtor' field will appear for you to select a debtor as well.

Sub Groups documents cannot be uploaded at this stage and will not include details for Portal Uploads, Invoice detail or Insurance detail. These sections will be hidden if a Sub Group building is selected. Work queues that include these fields should not be used for Sub Group documents.

Add Documents Ribbon

When in the *Add Documents* tab, these are the icons available in their relevant menus. Each icon is available at all times, except if you don't have necessary permissions for that icon/button. For example, the *Delete* button may be inactive. Each icon is explained in more detail in their own section below.



Select Documents

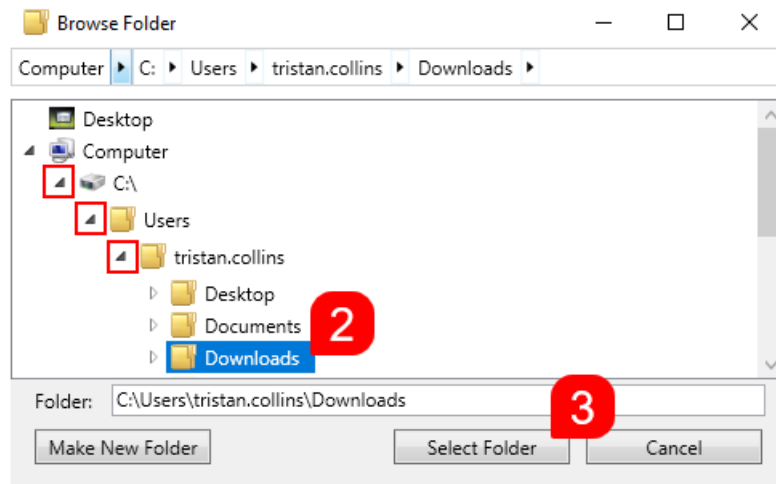
This option will allow the selection of an individual or multiple documents. Using this icon will add documents from a file location once, and not retain any *Recent Locations*.

1. From the *Add Documents* tab, click the *Select Document* button in the ribbon to open a *Windows Explorer* window.
2. Navigate to the file path of where the document is located.
3. Select document/ or multi select documents (holding *Shift* key to select a list of documents or *Ctrl* and click and pick sub sets of documents where required).
4. Click *Open*.
5. From the *Add Document* window you can apply a *Document Profile* if suitable.
6. Complete the *Document Details* as per the *Document Profile* requirements.
7. Click *Add Document*.

Add Folder

Use this icon to add another folder/windows directory to the *Recent Locations* list, on the left side. This performs the same functions as the *Add New Folder Location* option in the *Recent Locations* list, on the left side.

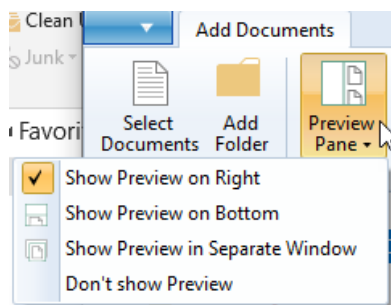
1. Click *Add Folder* (or *Add New Folder Location* option in the *Recent Locations* list, on the left side)
2. In the *Browse Folder* window, a list of drives will appear; You need to click the arrows to navigate to the required folder, then click the folder.
3. Click the *Select Folder* button.



4. You can also click the *Make New Folder* button to create a new folder within the folder you already have selected.
- You'll need to type in the name of the folder, then press your *Enter* key.
 - When prompted '*Folder doesn't exist. Do you want to create this folder?*' Click *OK*.

Preview Pane

Click to adjust the position of the document preview pane or remove the preview pane.

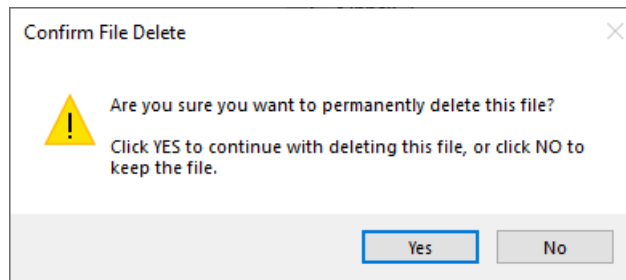


Open Folder

Opens the current selected folder in the *Recent Locations* list, on the left side.

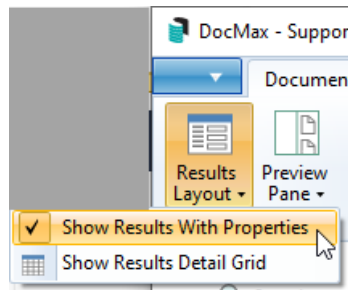
Delete

Permanently deletes the currently selected file from Windows. It does not place the file in the Windows Recycle Bin first, so use with extreme care, as it cannot be recovered. When clicked a prompt will appear.



Document Properties & Settings

Each document has its own set of properties and settings, which, at a minimum, include a *Building* (if the *Property Document* radio button is selected). When a single document is selected, and the *Results Layout* option in the ribbon is set to 'Show Results Properties', all of the fields in each section become available to edit.



It is also possible to simultaneously update the properties and settings of two or more documents. However, if two or more documents are selected (by ticking their boxes), the fields that can be updated are limited. See [DocMax | Bulk Update Documents](#) for more information. All documents added to DocMax will build history, which logs the changes made to the document properties and can be a tool to identify document property updates with usernames and dates.

Each of these sections is covered separately below. However, above these sections are almost always four fields available to update:

Document Profile: Assign a *Profile* to the document. Not available when multiple documents are selected. See [DocMax Profiles](#) for more information.

Assigned To: A drop-down list will display allowing you to select a user to whom the document should be assigned. See [My Assigned](#) for more information.

Status: Assign a Status to the document. See [DocMax Statuses](#) for more information.

Action Date: A date can be typed into this field in a DD/MM/YYYY format, or click the drop-down to select a date in the calendar, or select one of the quick links (*Tomorrow, In 3 days, etc.*). This will not trigger any alerts or reminders by itself, but it's another field that can be used as a filter in searches or Work Queues.

Browse by Building/Category
Browse documents for a Building and/or Category.

Building STRATAMAX ONLINE HELP KEEP 300621

Category

Refresh First 100 records displayed

Select / Deselect All

- {InvoiceDate: YYYY} AGM Minutes YYYY-MM-DD
- {InvoiceDate: YYYY} AGM Minutes YYYY-MM-DD
- {InvoiceDate: YYYY} AGM Minutes YYYY-MM-DD
- {InvoiceDate: YYYY} AGM Minutes YYYY-MM-DD
- {InvoiceDate: YYYY} AGM Minutes YYYY-MM-DD
- {InvoiceDate: YYYY} AGM Minutes YYYY-MM-DD
- {InvoiceDate: YYYY} AGM Minutes YYYY-MM-DD
- 01. Noms GC - CBCA
- AGM Agenda Template Example
- Arrears Letter
- Arrears Letter
- Arrears Letter
- FINANCIAL STATEMENTS
- FINANCIAL STATEMENTS
- FINANCIAL STATEMENTS
- FINANCIAL STATEMENTS
- FINANCIAL STATEMENTS
- FINANCIAL STATEMENTS
- FINANCIAL STATEMENTS
- FINANCIAL STATEMENTS
- FINANCIAL STATEMENTS
- FINANCIAL STATEMENTS
- FINANCIAL STATEMENTS
- FINANCIAL STATEMENTS
- FINANCIAL STATEMENTS
- FINANCIAL STATEMENTS

Save Changes Discard Changes

Document Profile Assigned To

Status Action Date

Custom Properties

Document Details

Property Document Internal Document

Building STRATAMAX ONLINE HELP KEEP 300621

Tristan Collins

Lot Details

Owner

Category

Title FINANCIAL STATEMENTS

Description

Notes Month End Financial Statement

Search Words Add +

Online Portal

Invoice Details

Document Source

File Details

References

MaxSoft
MaxSoft Pty Ltd
144 St Johns Road, Newmarket, QLD 4051
Australia
Tel: 07 5598 5400
Fax: 07 5598 5401
Email: info@maxsoft.com.au
Web: www.maxsoft.com.au

STRATA PLAN NO. 1521
1 Strata Avenue Highgate NSW 4221

BALANCE SHEET
AS AT 30 SEPTEMBER 2024

	ACTUAL 30/09/2024	ACTUAL 31/09/2024
OWNER'S FUNDS		
Administrative Fund	9,734.95	9,735.91
Sinking Fund	92,875.45	92,930.00
TOTAL	\$ 102,610.40	\$ 102,665.91
THESE FUNDS ARE REPRESENTED BY:		
CURRENT ASSETS		
Cash At Bank	61,356.00	61,356.00
Loans to Owners	5,660.00	4,900.00
Other Assets	960.00	960.00
Interest On Overdue Loans	238.07	288.49
Secondary Debtors	500.00	500.00
TOTAL ASSETS	69,644.07	67,844.49
EQUITY		
Old Clearing Account	12.77	18.18
Issued Share Capital	100.00	0.00
Creditors	1,288.00	1,275.00
Loans to Advance	2,584.00	2,584.00
TOTAL LIABILITIES	4,444.77	4,537.88
NET ASSETS	\$ 65,199.30	\$ 63,306.61

Document Details

- **Building:** Only available if the *Property Document* radio button is selected. Select the building from the drop-down list. Only active buildings are available. This may be populated automatically if you have the *Auto prefill setting* enabled.
- **Lot Details / Owner:** After selecting the building has been selected, you can choose a lot from this drop-down list. It will display the owner's name after the lot is selected.
- **Category:** Choose a category from this drop-down list. It's also one of the document fields that can be changed for multiple documents at once. See *DocMax Categories* for more info.
- **Title:** It's always recommended to type in the document title. If uploaded, this is displayed on the StrataMax Portal and other areas in StrataMax if linked to certain areas. Merge fields can be used in this field and are set up in *Profiles* or for *Action Buttons in Work Queues*.
- **Description:** This isn't mandatory and isn't displayed in other areas, but can be useful as another field to use as a filter when searching and as an internal description for other users.
- **Notes:** Notes are for adding any extra detail about the document that other users might find useful. When documents are passed through a Work Queue, including *merge fields* such as Current Username and Today will insert this information based on the person actioning the document.
- **Search Words:** Used strictly for search purposes. Previously added words can be selected from the drop-down list, or you can add more by clicking the *Add* button. It's also one of the document fields that can be changed for multiple documents at once. Any search words that have not been applied to any document will be removed automatically from the list overnight.

Online portal

Please see the [DocMax | Online Portal Uploads](#) article for more information.

Invoice Details

This section is used for invoices that are most likely going to be placed in a [Work Queue](#), and then later saved in the [Creditor Invoices](#). In most cases these details are entered when the document/invoice is added to DocMax.

- **Include Inactive Creditor:** Will include any inactive creditors in the 'Creditor' drop-down beneath.
- **Creditor:** Select the creditor from the drop-down menu. If the required creditor isn't in the list, it's because it isn't in the building you have selected - add the creditor in [Creditor Maintenance](#).
- **Invoice Date:** The date of the invoice. Not necessarily the date the invoice is processed in StrataMax, or when it is paid. Can be typed in a DD/MM/YYYY format or selected from the drop-down menu calendar.
- **Invoice Number:** The invoice number on the invoice itself.
- **Invoice Items:** This is where you add the *Expense Account*, the *Details*, and the *Amount* for each of the line items on the invoice.

Document Source

- **Added From:** Will display where the document originated from. This can be many things such as 'Building Transfer', 'Outlook', 'Document Append', etc. This cannot be changed.
- **Added By:** This will display the user who added the document. It is was added as part of a building transfer, it will display 'TRANF'. This cannot be changed.
- **Added Date:** The date the document was added. This cannot be changed.
- **File Name:** The name of the original file. This cannot be changed.
- **Email Details (Subject, Sender, etc.):** Only applicable if this is an e-mail added from Outlook, using the [Outlook Add-In](#). All of these fields can be changed and saved.

File Details

- **Document Id:** This is assigned automatically when the document is added to DocMax and cannot be changed. This ID is used throughout various other areas of StrataMax, such as in the [Roll](#) screen for owner documents, and in the [TaskMax](#) work orders screen.
- **Document Locked:** If not ticked, you can tick it to lock the document. If it's been locked already, you need a specific permission in [Security Setup](#) to unlock it. Any document that's locked will display a yellow notification saying it has been finalised and cannot be updated.
- **Document Expires:** This is the expiry date of the document. This field can be set automatically with the *Default expiry years* setting in the DocMax settings. It can be changed by users as well, and is one of the few document settings that can be changed for multiple documents at once.
- **View Extracted Text:** Clicking this button will open a separate window with the raw, unformatted document text, which has been detected using OCR technology. The accuracy of this relies heavily on the document type and source, so your mileage may vary in this regard - especially with scanned documents, such as old building plans. The purpose of this feature is so text can be copied and pasted elsewhere.

References

- **Linked Documents / Add Link:** Displays any documents that are linked to or superseded by this document. Click the *Add Link* button and select 'Link' or 'Supersede', then click *Save*.
- **Insurance Policy:** Used to link the document to the main insurance policy in the building - most likely the *901 Building* policy. Used predominantly for an insurance CoC or invoice. Once selected in DocMax, the document can be viewed in the *Insurance* screen.
- **Insurance Claim:** Used to link the document to a claim in *Insurance Claims*.

Add New Folder Location

1. Click *Add New Folder Location* at the bottom of the *Recent Locations* list, on the left side.
2. In the *Browse Folder* window, a list of drives will appear; You need to click the arrows to navigate to the required folder, then click the folder.
3. Click the *Select Folder* button.
4. You can also click the *Make New Folder* button to create a new folder within the folder you already have selected.
 - You'll need to type in the name of the folder, then press your *Enter* key.
 - When prompted '*Folder doesn't exist. Do you want to create this folder?*' Click *OK*.

Split Documents

Prior to adding a document to DocMax, a multiple page document can be split, either into individual pages or from a certain section / page. There are two methods of splitting document - split a document from a certain section using the Preview window, or split all pages from the document list.

Split Documents from Preview Window

1. In the 'Add Document' preview window of the image, you can split the document by navigating to the required page split and click 'Split Here'.
2. Split the document as many times as required. This will create a 'Document View' window for each of the split documents.
3. The 'Document View' windows will allow for adding the document in a split format.
4. Select the 'Document Profile' (if required)
5. If a profile has been applied, fill in the required fields of information.
6. Complete any additional field information.
7. Click 'Save and Close'
8. Complete steps 4-7 for any further split 'Document View' windows.

Split Documents from Document List

This is useful when scanning one page invoices in as a whole file and splitting to create individual invoices

for processing.

1. Highlight the required document for splitting from the 'Add Document' window and click 'Split All Pages'
2. The original document will remain the in the 'Add Document' window plus individual pages, for each, which can then be added to DocMax.

Processing 'Drag and Drop'

Documents can be added to DocMax by simply dragging and dropping the document from a Windows folder on top of DocMax. This can be the simplest method of adding documents to DocMax. Please be aware that you cannot drag and drop emails or attachments from Outlook - the Outlook Add-In should be used instead (see further down this article).

If the document (s) have been added in error, drag the cursor to the pink area, or click *Cancel* on the keyboard.

1. From a Windows Explorer window, select required document(s) and drag them on top of the DocMax screen; or
2. Users can *Drag and Drop* document (s) onto the StrataMax icon on the taskbar.
3. Drop the cursor over the blue area to add them to DocMax.
4. This will display the *Add Document* window, ready for the document (s) to be processed.
5. Apply *Document Profile* (recommended) and complete required fields.
6. Click *Add Document* once complete and proceed to next document.

DocMax Drop Box

Drop Boxes allow documents to be added to DocMax quickly and easily by placing the document file in a pre-defined network folder on your server. DocMax does not need to be running for this to occur.

When setting up a Drop Box within DocMax, it is recommended to use UNC pathing, rather than a drive letter for the path to the Drop Box. The reason for this is if the drive letter were to change or differ depending on the device where it has been set, this can cause the Drop Box upload functions to fail.

The Drop Box is commonly set up for the network folder which receives the outputs from an office scanner, but may be configured for any network location which is accessible by the user.

To do this, it is recommended to setup a base Drop Box folder as an application share for example:

```
\\Servername\Dropbox\Name_of_dropbox
```

If you were to have a server named "Office", you would create a new folder share called "Dropboxes" and within

this "Dropboxes" folder, create the required dropboxes, i.e.

```
\\Office\Dropboxes\Invoices  
\\Office\Dropboxes\Filing
```

Only documents that are supported by DocMax will be added via the Drop Box.

A Drop Box can be set up to apply a particular Profile on adding the document, or to prompt the user to enter details manually.

1. Open **DocMax**.
2. Click on *Administration tab*.
3. Select *Drop Boxes*.
4. Click *Add New*.
5. Browse to locate the Drop Box Location.
6. Select to Add to DocMax either 'with Profile' or via 'Add Document window'. (Refer to Processing Drop Box with Profile below for information on this option).
7. Click *Save Changes*.

Processing Drop Box with Profile

Processing documents via a Drop Box with a *Profile* would be best used for the same types of documents. An example of this is would be invoices, which can be added via a Drop Box with a *Profile*, so that they are automatically added to a *Work Queue*.

Documents added via a *Drop Box* folder with a *Profile* will remove the document from the Drop Box folder after it's been added to DocMax.

In order for the above to occur, the following basic criteria should be configured in the *Profile*:

- Status = 'Received'
- Category = 'Invoices'

This is simply one example of a scenario where it would appropriate to have a Drop Box with a *Profile*.

1. Scan, save or drag and drop document to 'Drop Box'.
2. Working with the example of Invoices, based on 'Profile' setting is pushing the document through to the Work Queue for 'Invoices for Processing'.
3. Process document properties as per normal procedure.

4. In this example, use the 'Action Buttons' to move the document to its next processing stage.

Processing Drop Box via Add Document

Processing with a Drop Box via a 'Add Document' window allows for a multitude of different documents to be added to this folder. It should be noted that the document properties (Profile) are assigned at the time of adding the document.

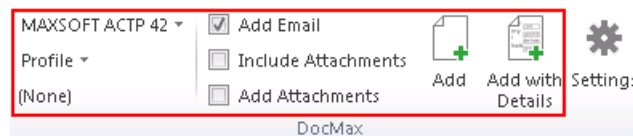
Right clicking on multi-page documents will allow a 'Split All Pages' function which will split the document into single pages plus retain the original file.

1. Scan, save or drag and drop document to *Drop Box*.
2. From the *Add Document* window, assign the Profile (recommended) for the document.
3. Complete any required document fields as per the Profile.
4. Click *Add Document*.

DocMax Outlook Add-In

For a more detailed guide on [enabling](#) the add-in, see the [DocMax Outlook Add-In](#) article.

The StrataMax Outlook Add-in allows emails and attachments to be added directly from Outlook into DocMax. The StrataMax Outlook Add-in provides the following controls from the 'Home' Tab in the Outlook ribbon:



These controls (except the *Settings* control) are also shown in the ribbon when a mail item is opened in a separate window.

The Outlook Add-In should be available within the 'Home' tab. However, if the Add-In is not available, depending on the version of Outlook; these are the basic steps to enable the Add-In.

1. Open Outlook and click *File > Options > Add-Ins > Go*
2. From the Add-Ins available, tick *StrataMax.OutlookAddIn*. If this is not available, please contact our Support Team.
3. Click *OK*, then *OK* again.
4. This may take a moment to load the Add-In, but should then be available in the 'Home' tab.

Add an Outlook Email to DocMax with a Profile

1. Select the email in Outlook (multiple emails can be selected by holding the shift or ctrl key and selecting emails).
2. In the Outlook Add-In section of the ribbon, tick the *Add Email* box and from the profile drop down list, assign the required profile.
3. Click *Add with Profile* to add the email to DocMax for either filing or further processing.

Add an Outlook Email to DocMax with no Profile

1. Select the email in Outlook (multiple emails can be selected by holding the shift or ctrl key and selecting emails).
2. In the Outlook Add-In section of the ribbon tick the *Add Email* and click *Add with Details* box.
3. Complete the *Document Details* from the *Add Document* window.
4. Click *Add Document* to add the document to DocMax for either filing or further processing.

Add an Outlook Email including its Attachments to DocMax

These steps will add the email including its attachments to DocMax; the attachments are only seen if the email is opened in DocMax.

1. Select the email in Outlook (multiple emails can be selected by holding the shift or ctrl key and selecting emails).
2. In the Outlook Add-In section of the ribbon tick the *Add Email* and *Include Attachments* box.
3. Select a *Profile* (optional) and select *Add with Profile* or click *Add with Details* to add the document with the ability to manually add further details in DocMax before clicking the *Add Document* button.
 - The email and any attachments will be added as a single file and will be able to be viewed by using 'Open' button in the ribbon in DocMax to display the original email and its attachments simultaneously.

Add an Outlook Email and its Attachments separately to DocMax

These steps will add the email to DocMax and add the attachments, but as separate documents in DocMax, so that they can be added with different details such as *Categories*, *Search Words*, etc.

1. Select the email in Outlook (multiple emails can be selected by holding the shift or ctrl key and selecting emails).
2. In the Outlook Add-In section of the ribbon tick the *Add Email* and *Add Attachments* box.
3. Select a *Profile* (optional) and select *Add with Profile* or click *Add with Details* to add both documents (the email and the attachments) with the ability to manually add further details in DocMax before clicking the *Add Document* button.
 - The email and any attachments will be added as separate files.

Add Only an Outlook Email's Attachments to DocMax

1. Select the email in Outlook (multiple emails can be selected by holding the shift or ctrl key and selecting emails).
2. In the Outlook Add-In section of the ribbon tick the *Add Attachments* box.
3. Apply a Profile and select *Add with Profile* or select *Add with Details* to add the *Attachment Details*.
 - This will add only the attachments to DocMax.